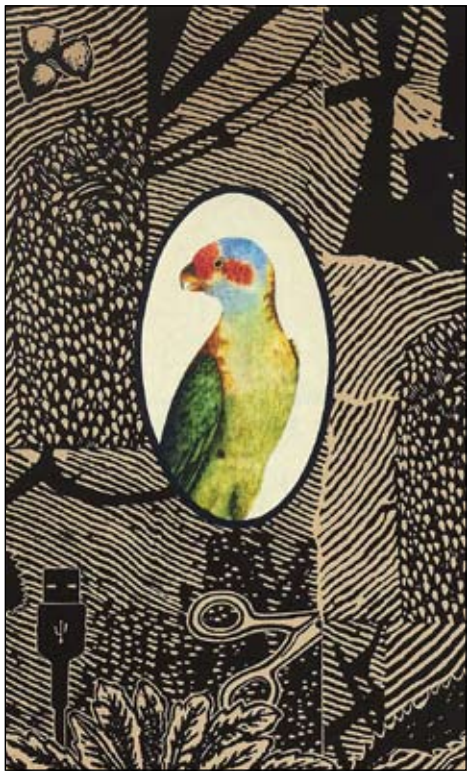


Artists Gallery Feature Artist: Jenny Kitchener



Musk Lorikeet

by Karen Welsh

A love of art and wildlife are in great combination at Nimbin Artists Gallery current exhibition of artworks by Jenny Kitchener.

Jenny was born in Sydney in 1955 and spent her childhood in close proximity to the Ku-ring-gai Chase National Park. Here she developed a great love of nature and of the Australian bush. She moved to the North Coast in 1980 where she lives on a property at Afterlee, west of Kyogle.

Personal reflections of place inform and provide the subject matter of much of Jenny's work. Inspiration is drawn from the beauty of the natural environment.

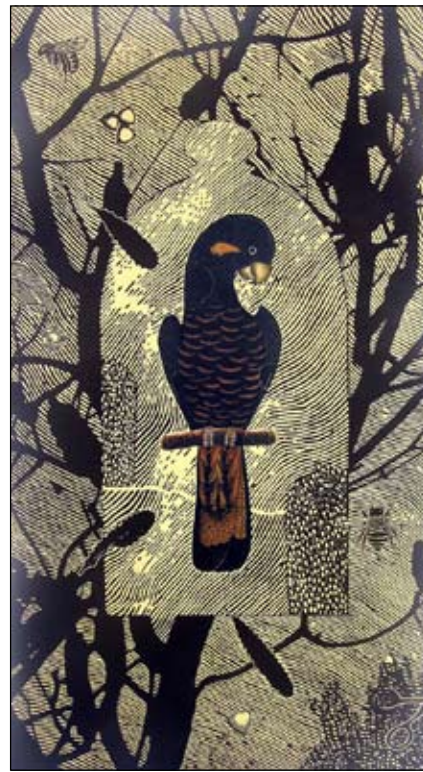
As a teacher, she has a longstanding association with the Printmaking Studio at Southern Cross University and in the Fine Arts Department of the North Coast Institute of TAFE.

Jenny's work is held in collections both in Australia and overseas, and recently she has had work acquired by the National Gallery of Australia.

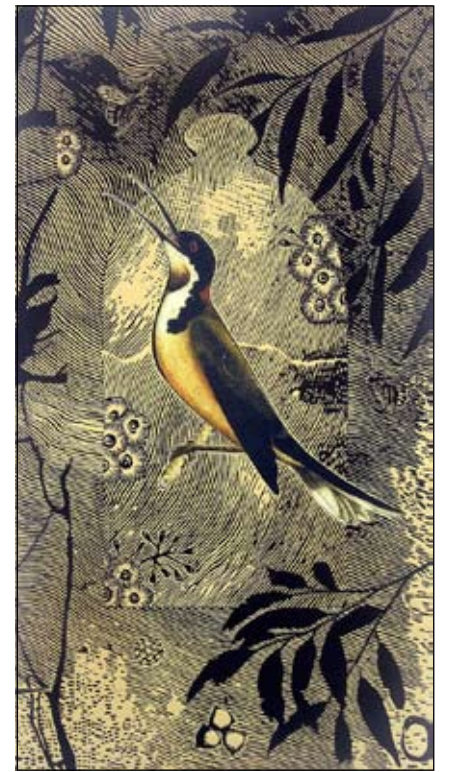
Jenny's work will be exhibited for eight weeks only, during July and August. This is one to put in your diaries.

The Nimbin Artists Gallery is located at 47 Cullen Street Nimbin, and is open 10am to 5pm (mostly) seven days a week. Phone 6689-1444 or email:

nimbinartistsgallery@gmail.com



Parrot



Honeyeater

fantAsian eatery
licensed

Along the verandah at 45 Cullen Street, Nimbin
Lunch: Wed-Sun from 11.30am, Dinner: Thurs-Sat 6pm
Bookings: Phone 0404-322-914

The Fibre Show – Unravelled



'Paddy, Richard and Jack' by Papillon

complexity and imagination that the felted form can take.

Juxtaposed is the installation by Papillon made from hot pink baling twine titled 'Paddy, Richard and Jack'.

This exhibition is testimony to all the artists who create in this form of art practice. The 'materials' that are used in this exhibition are so intrinsically part of our world, homes and lives and they have been re-invented, explored, re-formed, recycled and presented back to us to touch, feel, wear, use and just purely enjoy.

Polly Stirling has donated a felted pinafore dress to the Gallery and a bid can be placed in a silent auction at the Gallery. This will run for the duration of the exhibition which finishes on Saturday 4th August.

Moore Workshop Space

NVC (Non Violent Communication) Workshop will be held in the Moore Workshop Space on Saturday 7th and Sunday 8th July, 9.30am – 5.30pm. Bookings are essential as numbers are limited. For more information please contact Gail on 02 6689-1757.

Ink Painting Workshop with Sofie Dieu will be held on Saturday 25th August. This multi award artist will be in the area to teach. For more info and to see her work, see: www.sofie-dieu.com and contact email: sofiedieu@gmail.com if you are interested in attending.

Artists & Friends Lunch

The next Artists and Friends Lunch will be held on Thursday 26th July at 12.30pm with a set menu for \$20 including main and dessert.

Please call the Gallery on 6689-7449 or email: bkhgallery@harbourisp.net.au if you would like to come along.

A TASTE OF ART

blueknobhall gallery

Blue Knob Ceramic Studio
Blue Knob Cafe

Gallery & Cafe hours:
Thurs 10am - 3pm, Fri 10am - 3pm
Sat 8:30am - 3pm, Sun 10am - 3pm

Ceramic Studio: Thurs - Sat 10am - 3pm
Ph: 0266897449 www.blueknobgallery.com

NIMBIN NEWSAGENCY
FOR ALL YOUR EVERYDAY NEEDS

Toys
EFTPOS
Art Supplies
Local Postcards
Everyday Groceries
Office and School needs
Newspapers and Magazines
Prepaid Phone and Internet credit

ROXY GALLERY

Roxy Gallery
143 Summerland Way Kyogle
Phone 6632-3518

Opening Hours
Tues - Fri: 10am to 4pm
Saturday: 9.30am to noon

- Promoting local and regional arts;
- Providing emerging artists with opportunities to display and market their artworks in a professional exhibition space;
- Fostering cultural experiences for community and visitors to the area.

Email: roxygallery@kyogle.nsw.gov.au Web: www.kyogle.nsw.gov.au



'Last Day of Winter' by Claire Larivee



Origami Rose-Beret by Sachiko Kotaka

Resonances



'A leaf flies down' by Michael Hannan

by Ruth Tsimbinis

A visual response to Haiku Poetry and Classical Music is the focus of the July exhibition at the Roxy Gallery.

Merle Rankin, Sue Boardman, Pauline Ahern and Michael Hannan have come together in this exhibition entitled 'Resonances' with a focus on creating works in a variety of media which responds to haiku poetry written by Northern Rivers haiku poets, Nathalie Buckland, Anne



'Earth Song' by Sue Boardman

Perry and Helen Davidson and a selection of classical music. 'Resonance' will be on show from 3rd to 28th July.

After undertaking a successful exhibition in 2016, 'Sound Images', these four artists have continued their interest and inspiration in using the arts of both haiku poetry and classical music as vehicles to generate creative expression, and in 'Resonances' they have incorporated local haiku poet writers.

In addition, Merle Rankin and Michael Hannan will resonate to works by the American minimalist composer, Philip Glass.

Sue Boardman has created paintings inspired by Michael Hannan's 12-movement piano work, *Resonances*, which is based on the signs of the zodiac.

Drop in to the gallery, flick off an email to: roxygallery@kyogle.nsw.gov.au or phone for a chat on 6632-3518.

From Nimbin to the Commonwealth Games

by Ginger O'Brien

Local mother and daughter duo Amelia and Donna Hensen's unique blend of contemporary and traditional pieces were selected to represent Indigenous art on the world stage at the recent Commonwealth Games.

Ex-Nimbin Central School student Amelia explains that they literally dream what they are going to paint. Sometimes they dream one element of a painting and wait for further inspiration.

Her mother Donna once dreamed of an octopus smothering her for two years before she was able to translate that dream into a three-dimensional painting.

Amelia and Donna are guided by traditional Aboriginal symbolism which they weave into their stories in a contemporary way. The emotion of the story is expressed through the meaningful colours they select, ultimately capturing a snapshot of the spiritual realm they connect to.

Through their paintbrushes they successfully 'translate' their dreams onto a wide range of surfaces depending on their audience.

Inspired by nature, the environment and their cultural heritage. Amelia



Donna Hensen with her turtle painting 'Gootamundra Dreaming'

explains how they can paint onto almost any medium. "We have used stone, canvas, wood, plaster, clay and leather."

Donna is also a graphic designer and has been using her graphic skills to combine their artwork's into a digital format for a range of educational resources for teachers.

Their online business 'Donna Hensen Designs' has an exciting future.

In August their website we will have a members based community called 'The Yarners Inner Circle.' The online platform gives one access to the

video library, discounted Aboriginal Educational resources and artworks. Customised workplace training and coaching; to promote cultural awareness will also be available.

There is also a discussion board set up for collaborating with Donna and Amelia in the creation of authentic Aboriginal resources for the workplace and schools.

For more information, contact the ever-friendly Amelia and Donna. Facebook: *Donna Hensen Designs* Email: donnahensendesigns@gmail.com

Upcoming showings at Serpentine

by Fiona McConnachie

The next show at Serpentine Gallery is a members' show called 'Abstract' and will run from 13th to 31st July with the opening on Friday 13th, 6 – 8pm. We encourage all our artist members to participate in this exciting exhibition and to have work dropped off to the gallery from 9th to 11th July.

Following 'Abstract' is 'Courage/ Freedom/ Love' – a solo exhibition by Philippa Leader running from 3rd to 21st August.

Philippa Leader is a local artist who has lived at Billen Cliffs in the Northern Rivers for 30 years. In this exhibition she explores body decoration as an expression of identity through pictures



'Union' by Jay Manby

of women whose clothing, jewellery, braids, dreads, tattoos, charms, claws and scarves define them. Body decoration ties to personal and spiritual beliefs and the Northern Rivers is a place of diversity and acceptance and celebration of difference.

"I chose to paint some portraits of Katheryn Winnick as Lagertha from the 'Vikings' series, for her tremendous strength and determination. And I pay homage to Frida Kahlo, an icon of Mexican Surrealism who is as much an inspiration for today's women as she was in her own time.

Philippa uses a wide range of electronic and paper-based resources to develop acrylic paintings on canvas and this body of work continues her passion for fantasy art. She has exhibited widely in Australia and frequently in Lismore.

'Courage/ Love/ Freedom' opens on Friday 3rd August at 6pm. All are welcome to attend this very beautiful show.



'Girl' by Philippa Leader

Serpentine Community Arts Gallery is located at 17a Bridge Street, North Lismore, phone 6621-6845, email: gallery@serpentinearts.org web: www.serpentinearts.org Facebook: *SerpentineArts* Instagram: *serpentinecommunitygallery*



The 34th Annual Bentley Art Prize will be held on 3rd, 4th and 5th August 2018 at Bentley Public Hall.

14 Sections – over \$10,000 in prizemoney

Entry forms via the website: www.bentleyartprize.com.au

Entries close 25th July 2018

Enquiries: Helen Trustum
6663-5283 / 0407-431-725

ENERGY HEALING

- balancing
- clearing

VIBRATIONAL ESSENCES

Remote sessions available

Marilyn – 0413 442 808



ARMONICA
Espresso Bar & Wood Fired Pizza
50 Cullen Street NIMBIN
66890094

TREEFELLAS

Timber Felling
Tree Climbing
BLUE KNOB
Mob. 0429 897 234

Has Your Hot Water System Been Checked Lately?

Ever Heard Of A Sacrificial Anode?

A sacrificial anode is a vital part of your water system, and having it inspected can be the difference between an efficiently working system and a costly replacement.

Manufacturers recommend that you maintain the anode in your system in order to prevent damage from rust + corrosion. After its 5th birthday – warranty expires.

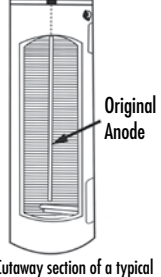
THE ANODE IN YOUR SYSTEM SHOULD NEVER BE ALLOWED TO CORRODE AWAY, WHATEVER TYPE OR BRAND OF SYSTEM YOU HAVE – Solar, Electric, Gas or Heat Pumps.

FOR A LIMITED TIME we will check your anode in your area free of charge.

"REMEMBER, YOU CAN'T LOSE. NO ANODE REPLACEMENT, NO CHARGE"

Comes with a 5 year warranty
Make your Hot Water System last for 30 years without replacement.

AUSSIE ANODES
Arrange a free inspection: phone
1300 166 673



Cutaway section of a typical electric hot water heater